

Queen's Park Vision, Values Spiritual Capacities and Curriculum Principles

Our Vision is:

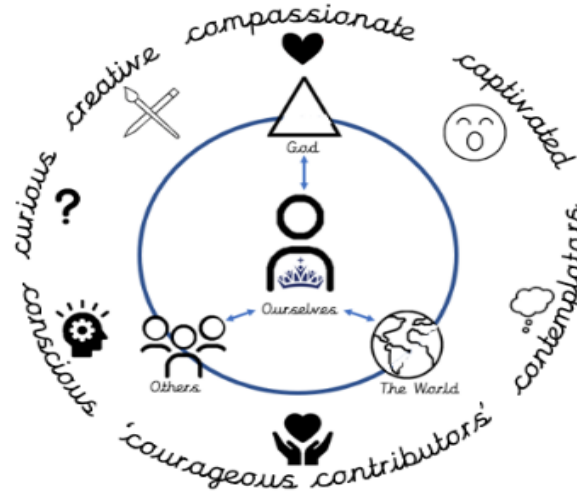
With God, everything is possible (Matthew 19:26) #everythingispossible

Through our continued service to our community and rooted in our Christian Values, the opportunities we provide inspire our children and adults at our school to learn, to grow and to flourish. We are committed to developing our children into confident individuals who make a positive difference through developing a respect for themselves, each other and the world around them. For with God, everything is possible. (Matthew 19:26)

Our Crown Curriculum Principles are:

Our Core Christian Values are:

- Love 
- Trust 
- Respect 
- Forgiveness 
- Hope 
- Honesty 



Our shared language for defining spirituality

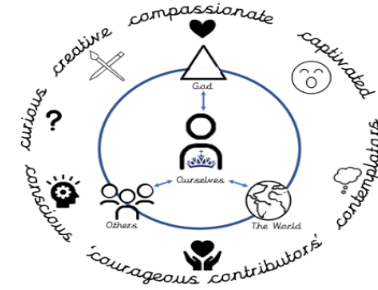
At Queen's Park CE/URC Primary School, we agreed on the definition of spirituality development as connecting with ourselves, others, the world and God, through whom, everything is possible. (Matthew 19:26).





We are working really hard to enable our children to meet their full academic potential in all subjects

We want to embed our shared language to define spirituality and continue to link it to our work on OPAL



The Queen's Park Way

We are continuing developing our own set of expectations and curriculum for character, behaviour and routines.



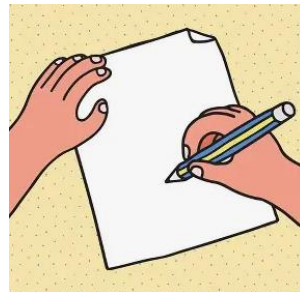
School Improvement Priorities at Queen's Park C.E./U.R.C. Primary School 2025-2026

To encourage and support our children and families to be in school every day - on time!



We are working on growing leaders of the future at all levels and supporting new leaders in school

We are looking at our writing curriculum to ensure we have a community of confident, fluent writers who have mastered the basic skills



Our vision for next year is to enhance our teaching and learning through the use of technology. All KS2 children will have 1:1 IPADs. KS1 - will have 1:2.